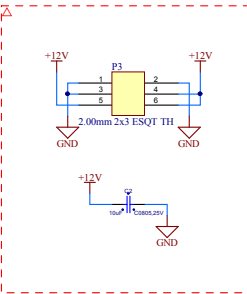


CTI Warning Suppress Legend

- No Driving Source
- IO Pin - Output Port or Output Sheet
- IO Pin - Input Port or Input Sheet
- IO Pin - Power Pin
- IO Pin - Output Pin
- Power Pin - Output Port or Output Sheet
- Power Pin - Input Port or Input Sheet
- Power Pin - Output Pin
- Floating Input Pin
- Unconnected Wire
- Multiple Net Names
- Unconnected Sheet Entry



XDG Power Input

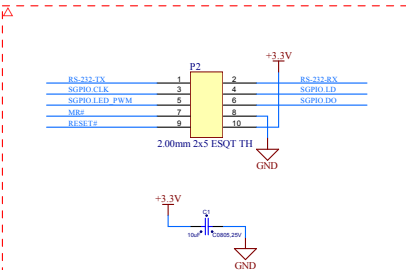


Connect Tech Inc. XDG Power Input

The XDG requires a +12V for operation. P3 connects this Design Package to the XDG and supplies the power.

If a wide input power range is required, this should be added into the design.

Serial GPIO and RS-232



Connect Tech Inc. XDG Serial GPIO

The XDG Vitesse VSC7429 outputs a Serial GPIO Stream for LED Control. If LED indication for ACTV or LINK# is required, then the Serial GPIO Stream will need to be accessed.

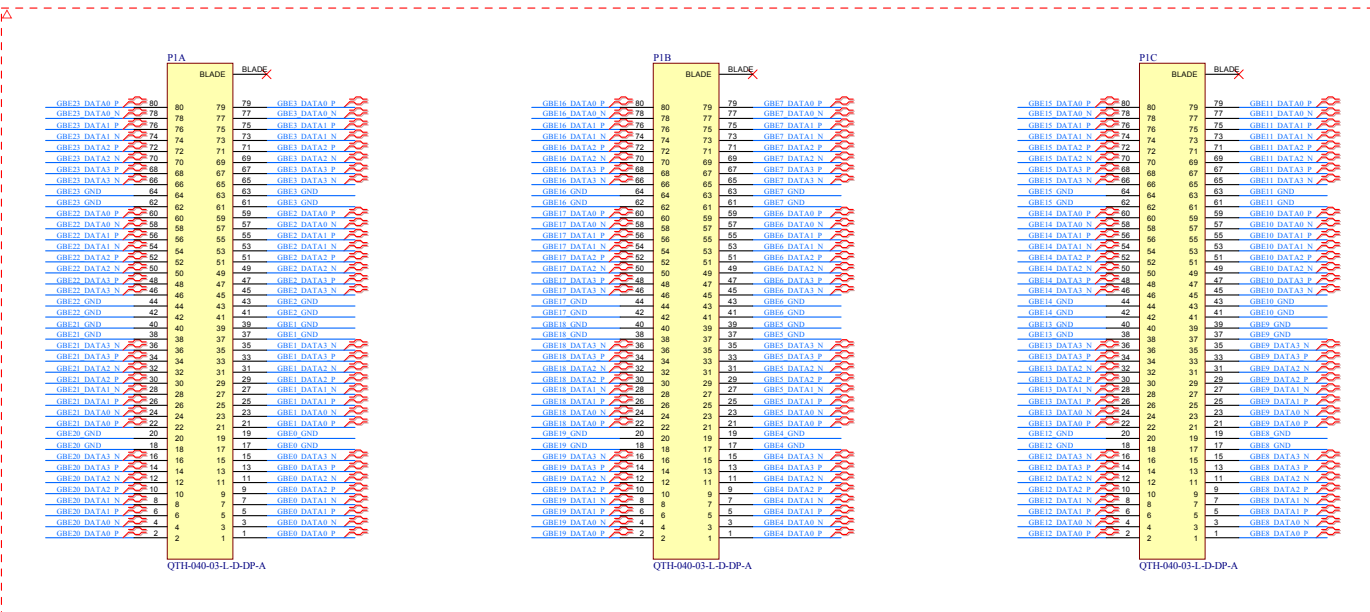
Please contact Connect Tech Inc. for a Serial GPIO LED Stream reference design.

Connect Tech Inc. XDG RS-232

The XDG Vitesse VSC7429 has multiple control interfaces. A Web GUI for Top Level Information can be accessed via a Gigabit Ethernet Link.

For in-depth control, a RS-232 Link is provided with +3.3V (Supplied by the XDG) and GND. This provides access to the core functions of the Vitesse VSC7429 located on the XDG.

24-Port Gigabit Ethernet Connection



SAMTEC QTH-040-XX-L-D-DP-A Connectors

The XX values in the Part Number specify the height of the QTH Connector. Connect Tech Inc. recommends the use of the following Part Numbers:

- QTH-040-03-L-D-DP-A 11.00mm Height
- QTH-040-04-L-D-DP-A 16.00mm Height
- QTH-040-05-L-D-DP-A 19.00mm Height

Other height options are available from SAMTEC. Please verify the component clearance before use in design.



Connect Tech Inc.

CTI Doc Num: XDG Reference Package

PCB Num: XDG Reference Package

PCB Rev: A

Title: XDG Reference Package

Sheet Name: XDG Design Package SchDoc

Date: 30/11/2015

Filename: XDG Design Package SchDoc

Designer: TC

Sheet: 1 of 1