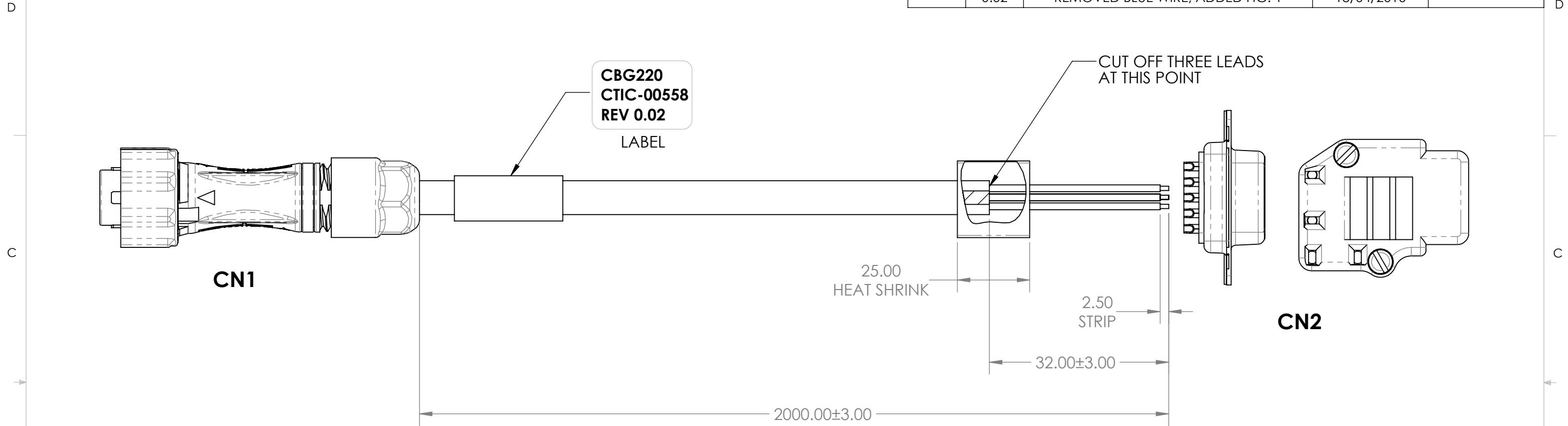
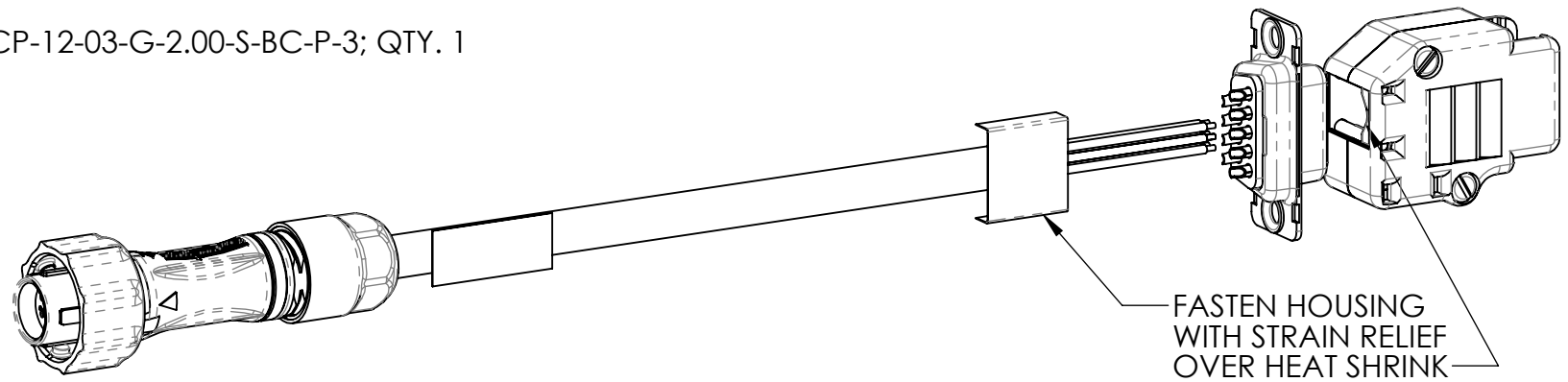


REVISIONS				
ECN	REV.	DESCRIPTION	DATE	APPROVED
	0.01	ADDED TO PINOUT CHART	24/02/2016	
	0.02	REMOVED BLUE WIRE; ADDED FIG. 1	18/04/2016	



MATERIAL NOTES

CN1: CONNECTOR ASSEMBLY (PURCHASED), HARDWARE INCLUDED, P/N: ACP-12-03-G-2.00-S-BC-P-3; QTY. 1
 CN2: DB9 FEMALE CONNECTOR, P/N: DE09S064TLF; QTY. 1
 DB9 HOUSING, P/N: 863093C09ALF; QTY. 1
 HEAT SHRINK: AS PER MANUFACTURING; QTY. 1@25.0mm
 LABEL: 1.44X0.5" WHITE SELF LAMINATING VINYL, P/N: PDL-2



PINOUT CHART

CN1	SIGNAL	COLOUR	CN2
1	RX/RX+	BROWN	3
2	TX/TX+	RED	2
3	GND	ORANGE	5
4	TX-	YELLOW	4
5	RX-	GREEN	1
---			---
---			---
---			---
---			---

SEE SHEET 2 FOR ASSEMBLY AND TEST PROCEDURE

THIRD ANGLE 	UNLESS OTHERWISE SPECIFIED: DIMENSIONS ARE IN MM	DRAWN D.P.	DATE 11/01/2016	Connect Tech Inc. <i>Embedded Computing Experts</i> 42 ARROW ROAD, GUELPH, ON, CANADA, N1K 1S6
	TOLERANCES: ANGULAR ± LINEAR/DIA. ± SURFACES:	CHECKED P.D.	DATE 18/04/2016	
WHERE USED	MATERIAL SEE NOTES	ENG APPR.	DATE	TITLE: CABLE ASSEMBLY, LINQ/GbE EXTERNAL SERIAL
THIS DRAWING AND SPECIFICATION SHOWN IS CONFIDENTIAL AND IS THE PROPERTY OF CONNECT TECH INCORPORATED. IT IS NOT TO BE REPRODUCED OR COPIED OR USED AS A BASIS TO MANUFACTURE ANYTHING SHOWN WITHOUT PRIOR WRITTEN PERMISSION OF CONNECT TECH INCORPORATED. ALL RIGHTS TO DESIGN OR INVENTION ARE RESERVED.	FINISH N/A	MFG APPR.	DATE	SIZE B
		DO NOT SCALE DRAWING	Q.A.	DATE
		SHEET 1 OF 2	SCALE: 2:1	DOCUMENT NO. CTIC-00558
				REV 0.02

ASSEMBLY INSTRUCTIONS

1. REMOVE AND DISCARD ANY LABEL(S) ATTACHED TO ANY LEADS.
2. STRIP BACK INSULATION TO 32.0mm.
3. CUT AND DISCARD THE BLUE WIRE.
4. STRIP INSULATION FROM ENDS OF EACH CONDUCTOR 2.5mm.
5. CUT TO LENGTH 1 PIECE OF HEAT SHRINK AT 25.0mm. INSERT MID WAY OVER LEADS/INSULATION AND SECURE INTO PLACE.
6. SOLDER LEADS TO DB9 MALE CONNECTOR AS SPECIFIED ON PINOUT CHART ON SHEET 1.
7. DRESS LEADS INTO DB9 HOUSING AND SECURE TWO HALVES OF HOUSING, ENSURING IT IS SECURED OVER HEAT SHRINK. SEE FIGURE 1 FOR PARTS.
8. PRINT LABEL WITH INFORMATION AS SPECIFIED ON SHEET 1 AND AFFIX TO THE WIRES AS SHOWN.

TESTING INSTRUCTIONS

1. CHECK FOR CONTINUNITY FOR EACH PIN.

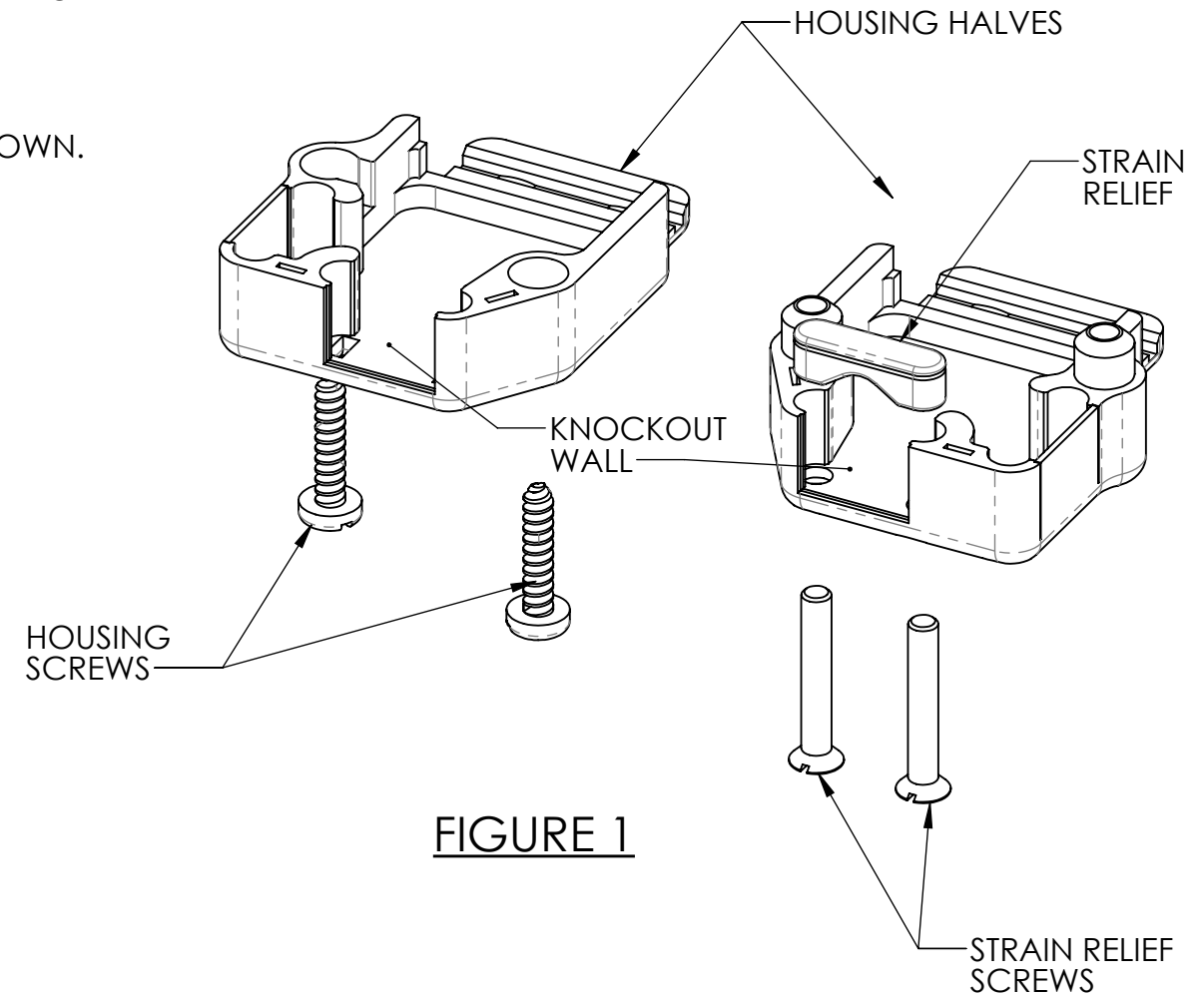


FIGURE 1

CT **Connect Tech Inc.**
Embedded Computing Experts
 42 ARROW ROAD, GUELPH, ON, CANADA, N1K 1S6

TITLE:
**CABLE ASSEMBLY,
 LINQ/GbE
 EXTERNAL SERIAL**

DO NOT SCALE DRAWING	SIZE	PART NO.	CBG220	REV
SHEET 2 OF 2	SCALE: 2:1	DOCUMENT NO.	CTIC-00558	0.02