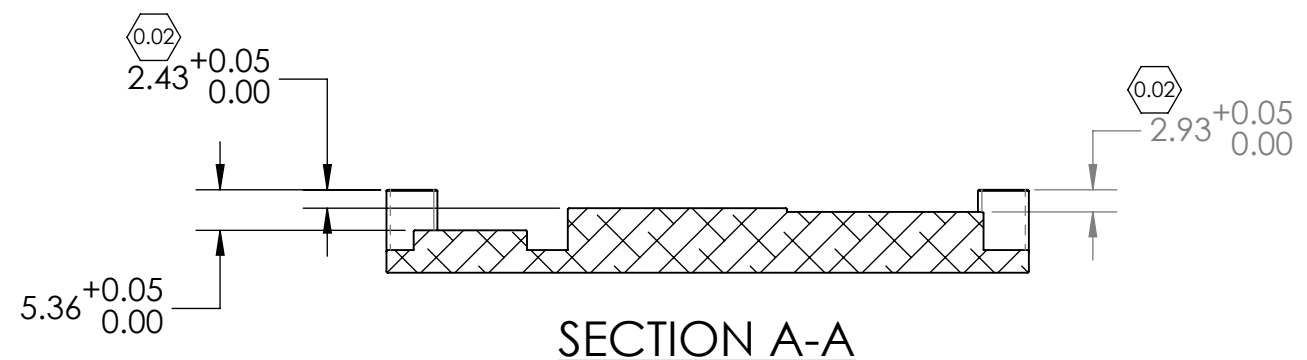
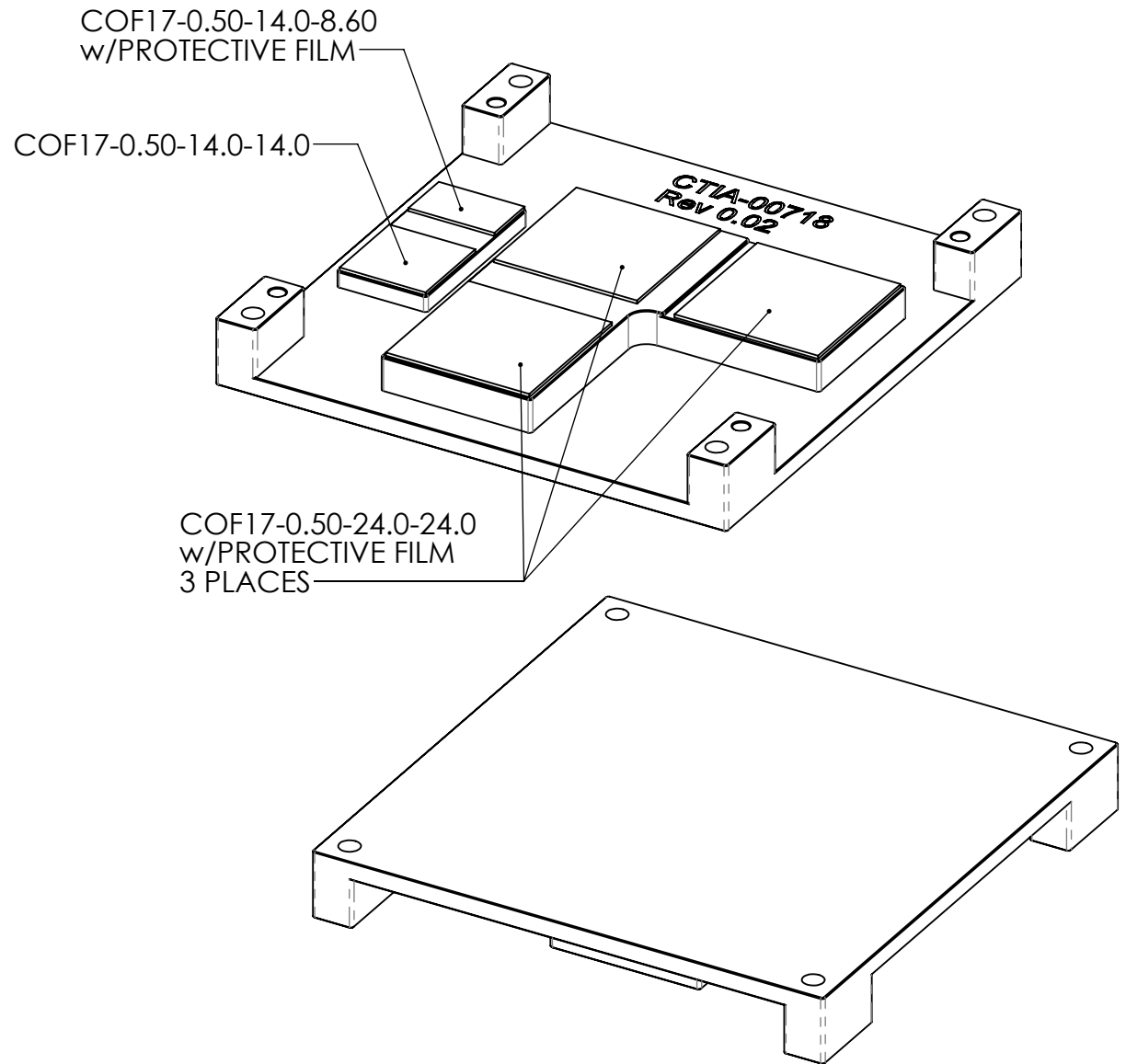
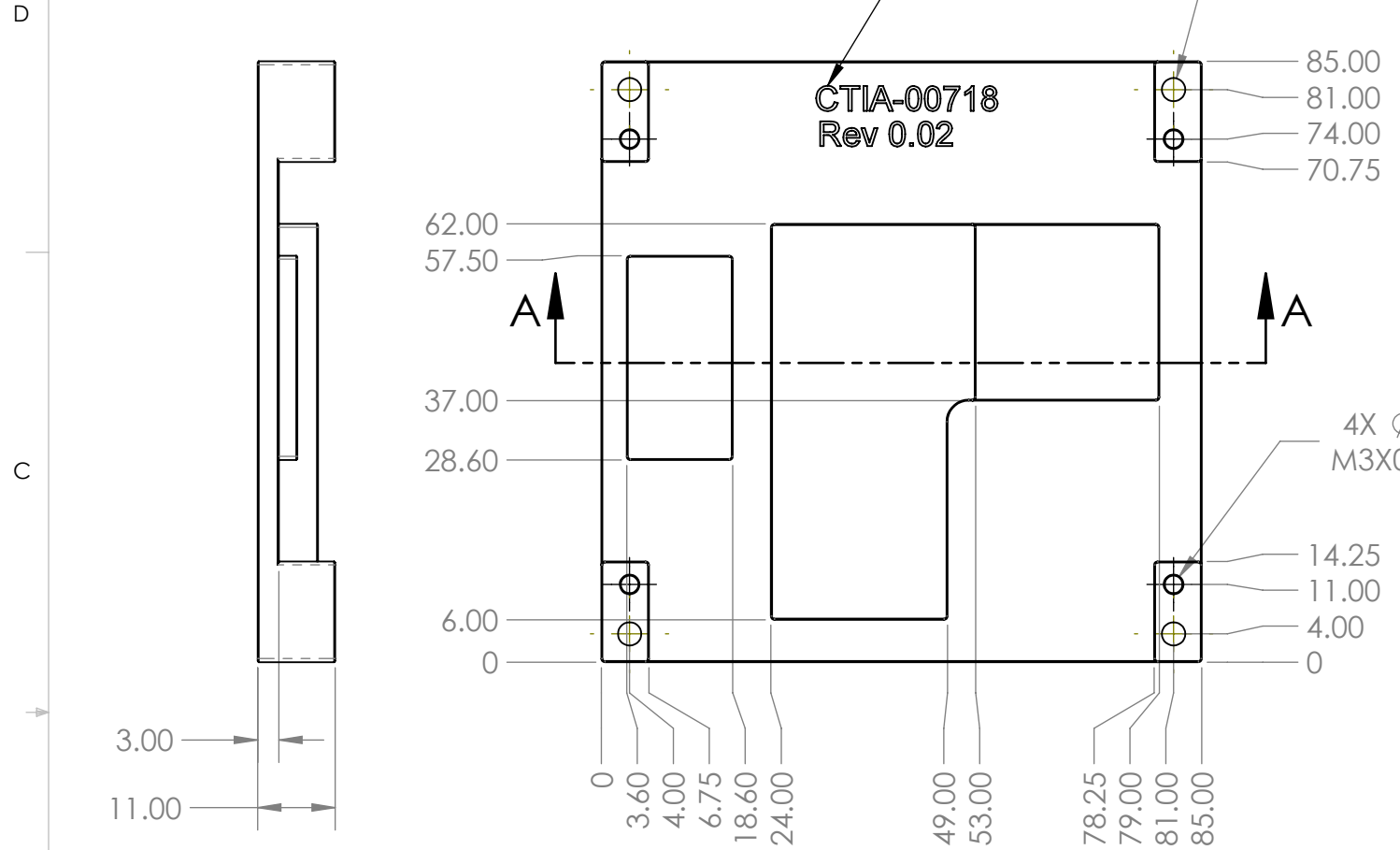


REVISIONS				
ECN	REV.	DESCRIPTION	DATE	APPROVED
	0.01	MODIFIED PADS; REMOVED C'BORE	24/03/2016	
	0.02	ALTERED PAD HEIGHT	20/03/2019	



NOTES: UNLESS OTHERWISE SPECIFIED

1. ALL DETAILS ARE AS PER CAD MODEL GEOMETRY. FOR OTHER DETAILS AND INFORMATION REFER TO THIS DOCUMENT.
2. CAD MODEL GEOMETRY IS NOMINAL.
3. PART MUST BE DEBURRED TO REMOVE ALL SHARP EDGES. ALL THREADED HOLES TO HAVE A MINIMUM LEAD IN CHAMFER. MINIMUM CHAMFER 0.150.
4. TOLERANCES ARE FOR PART MANUFACTURE ONLY AND NOT FOR TOOLING.
5. THREADED HOLES MUST BE MASKED PRIOR TO APPLYING FINISH.

THIRD ANGLE 	UNLESS OTHERWISE SPECIFIED: DIMENSIONS ARE IN mm	DRAWN D.P.	DATE 24/02/2016	 Connect Tech Inc. <i>Embedded Computing Experts</i> 42 ARROW ROAD, GUELPH, ON, CANADA, N1K 1S6
	TOLERANCES: ANGULAR ± LINEAR/DIA. ± 0.13 SURFACES: 63 32 ✓	CHECKED	DATE	
WHERE USED PRF1125	MATERIAL 6063-T5 ALUMINUM ALLOY	ENG APPR.	DATE	TITLE: HEAT PLATE - CONDUCTION COOLED XDG201
THIS DRAWING AND SPECIFICATION SHOWN IS CONFIDENTIAL AND IS THE PROPERTY OF CONNECT TECH INCORPORATED. IT IS NOT TO BE REPRODUCED OR COPIED OR USED AS A BASIS TO MANUFACTURE ANYTHING SHOWN WITHOUT PRIOR WRITTEN PERMISSION OF CONNECT TECH INCORPORATED. ALL RIGHTS TO DESIGN OR INVENTION ARE RESERVED.	FINISH BLUE ANODIZE TYPE II, CLASS 2	MFG APPR.	DATE	DO NOT SCALE DRAWING
		Q.A.	DATE	SHEET 1 OF 1
				SCALE: 1:1
				SIZE B
				DWG. NO. CTIA-00718
				REV 0.02