



Connect Tech Inc.
Industrial Strength Communications

FreeForm/104 Windows

Install Guide

The information contained in this document is subject to change without notice. Connect Tech, Inc. shall not be liable for errors contained herein or for incidental consequential damages in connection with the furnishing, performance, or use of this material. This document contains proprietary information that is protected by copyright. All rights are reserved. No part of this document may be photocopied, reproduced, or translated to another language without prior written consent of Connect Tech, Inc.

Copyright 2007 by Connect Tech, Inc.

Release 1.00 January 30, 2007

Release History

Release 1.00 January 30, 2007
Original



Contents

1	Getting Started	2
1.1	Introduction.....	2
1.2	Supported Windows Operating Systems	2
1.3	Obtaining Driver Files	2
1.4	Contacting Technical Support.....	2
2	Setting Up the FreeForm/104 in Windows	3
2.1	Installing Driver Files	3
2.2	Board Names.....	19
3	Known Issues	20
3.1	Windows Vista IO Range Conflict	20
3.2	Device Name Cannot Contain Spaces	20



1 Getting Started

1.1 Introduction

Welcome to the Windows FreeForm/104 Installation Guide.

This installation guide will walk you step by step through the software driver installation of the FreeForm/104. The screenshots used in this document were all taken from Windows XP, but will apply to all support versions of Microsoft Windows with slight variances.

1.2 Supported Windows Operating Systems

As of January 25, 2007, the following windows operating systems are supported with the FreeForm/104 Windows driver:

32-Bit Operating Systems

- Windows 2000
- Windows XP
- Windows Server 2003
- Windows Vista

64-Bit Operating Systems

- Windows XP x64
- Windows Server 2003 x64
- Windows Vista x64

1.3 Obtaining Driver Files

For driver updates, manuals, and installation guides please check the Connect Tech Download Zone at <http://www.connecttech.com/asp/Support/DownloadZone.asp>.

1.4 Contacting Technical Support

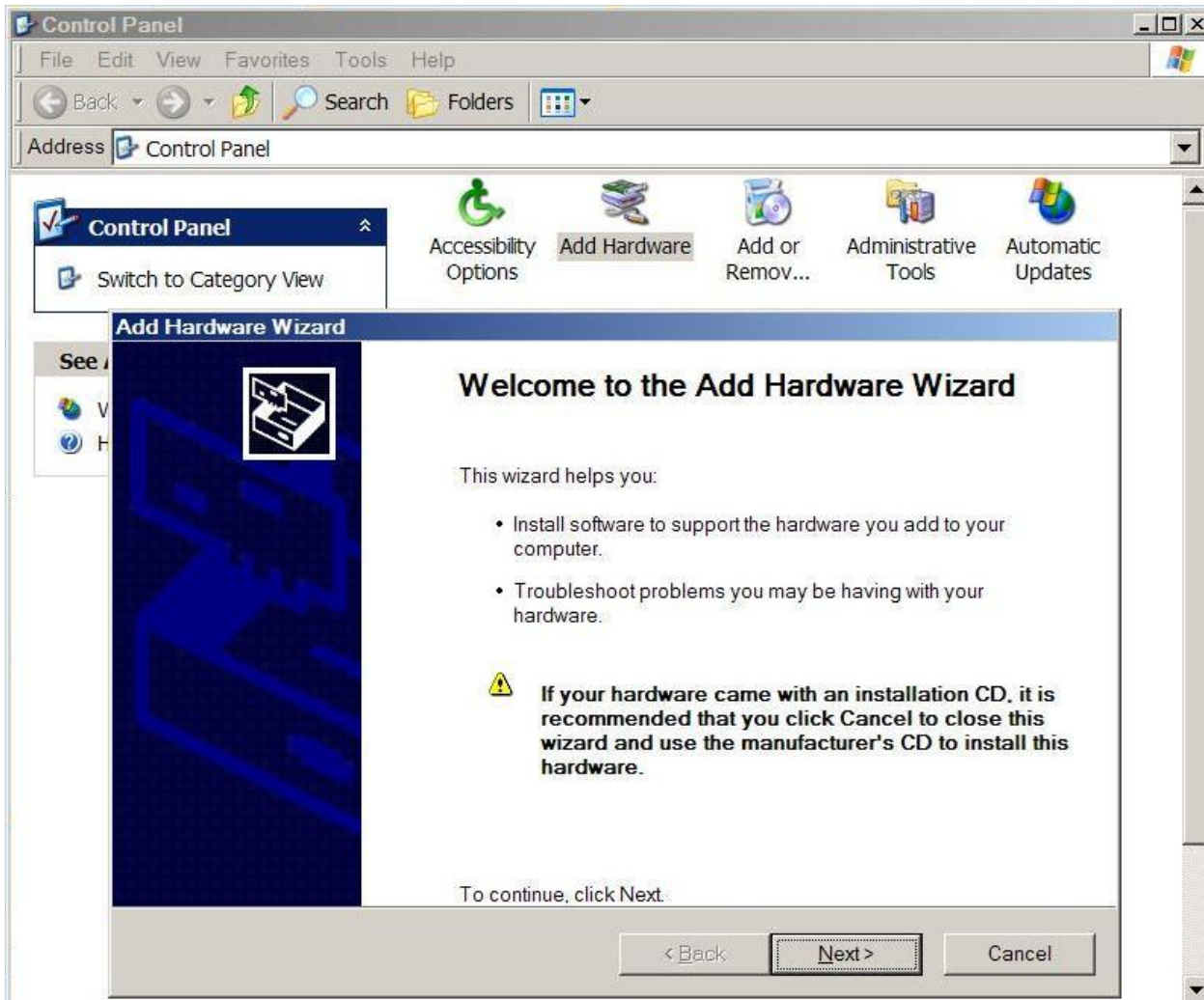
If you require assistance please check the Connect Tech product manuals, specification sheets, or Knowledge Database (KDB) at <http://www.connecttech.com/sub/Support/Support.asp>.

If you have any further questions please contact the Technical Support department by email at support@connecttech.com.

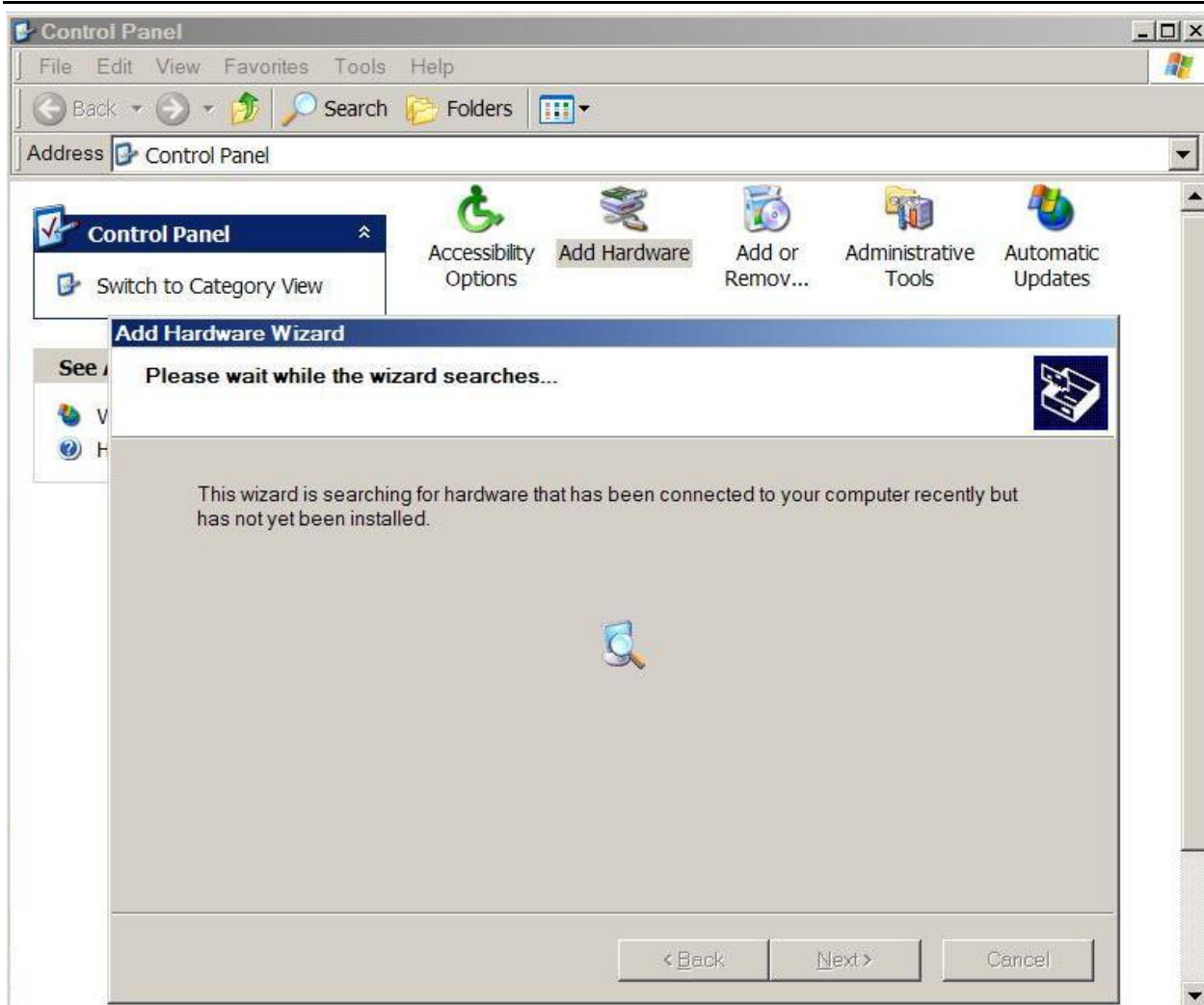
2 Setting Up the FreeForm/104 in Windows

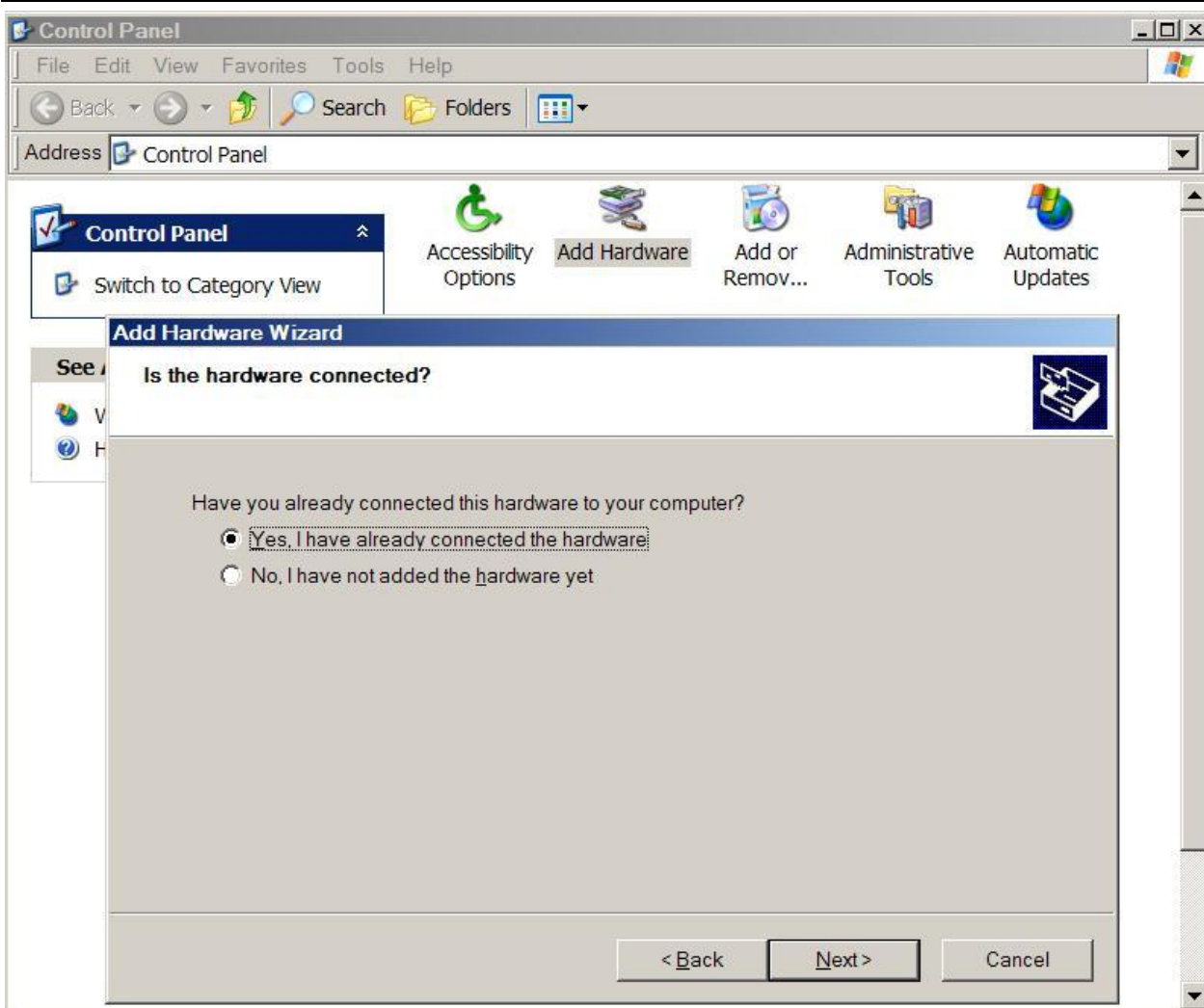
2.1 Installing Driver Files

To begin installation, open the 'Add Hardware' wizard from the "Control Panel".

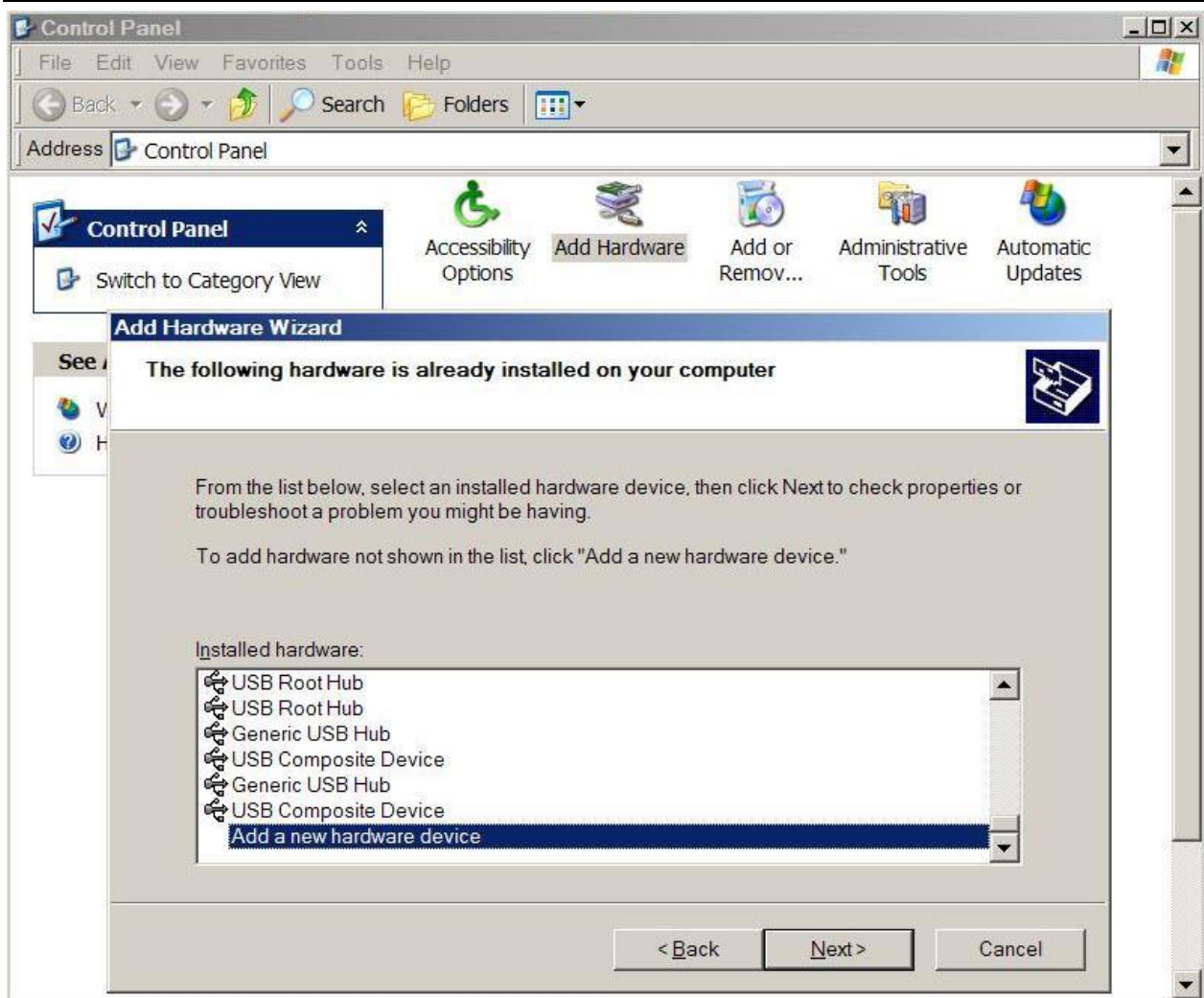


Click 'Next'.

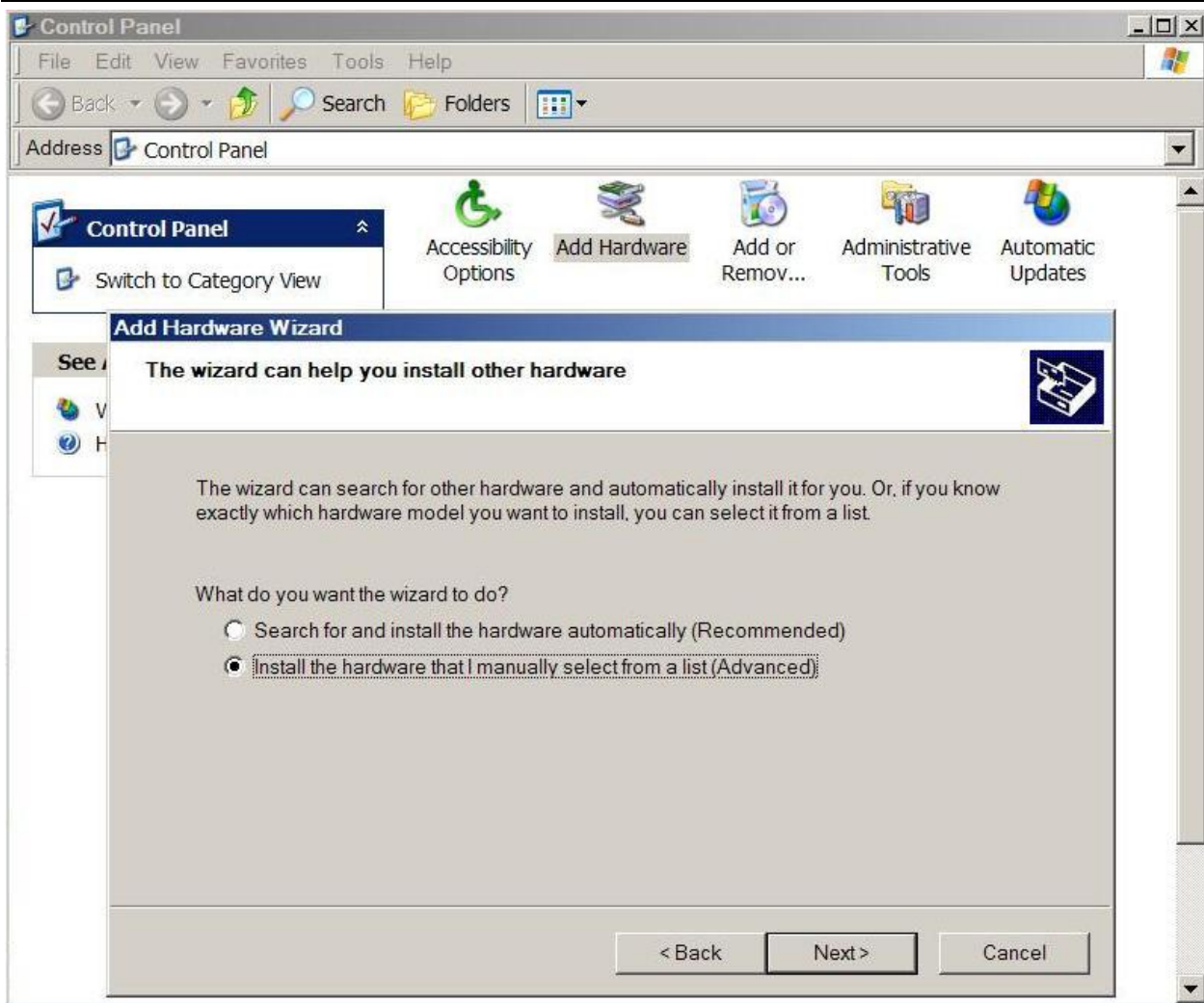




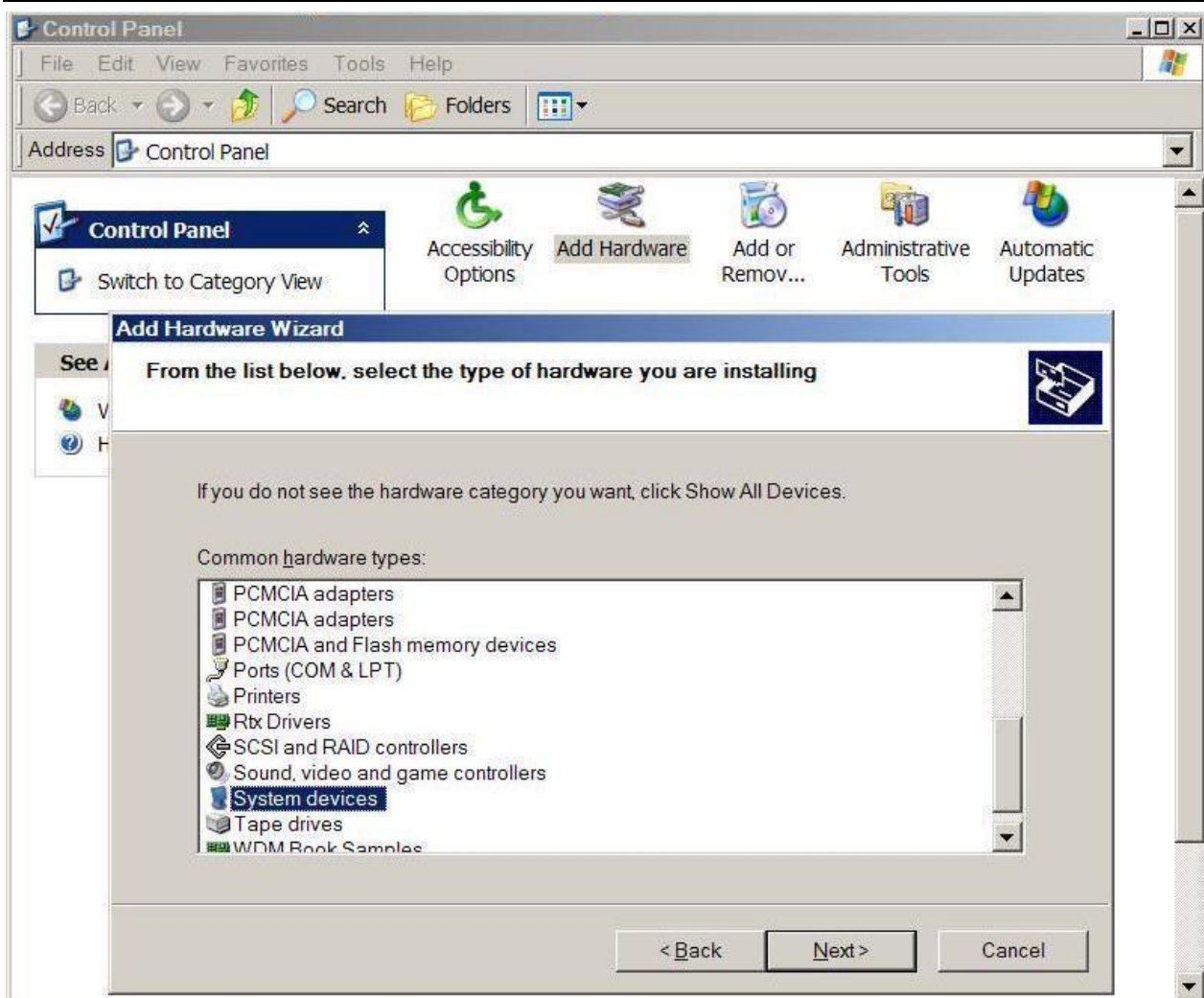
Check 'Yes, I have already connected the hardware'. Click 'Next'.



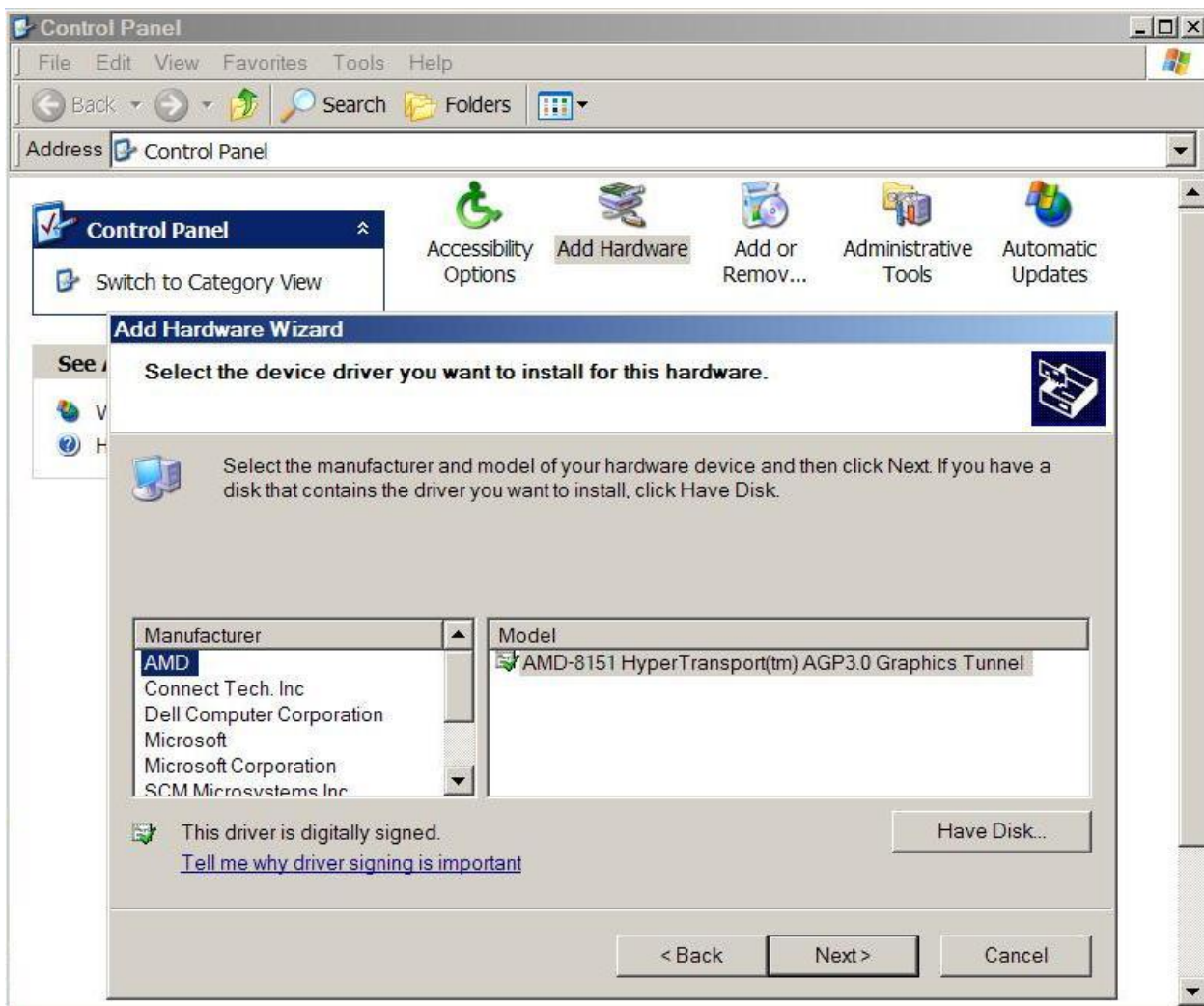
Select 'Add a new hardware device' and Click 'Next'.



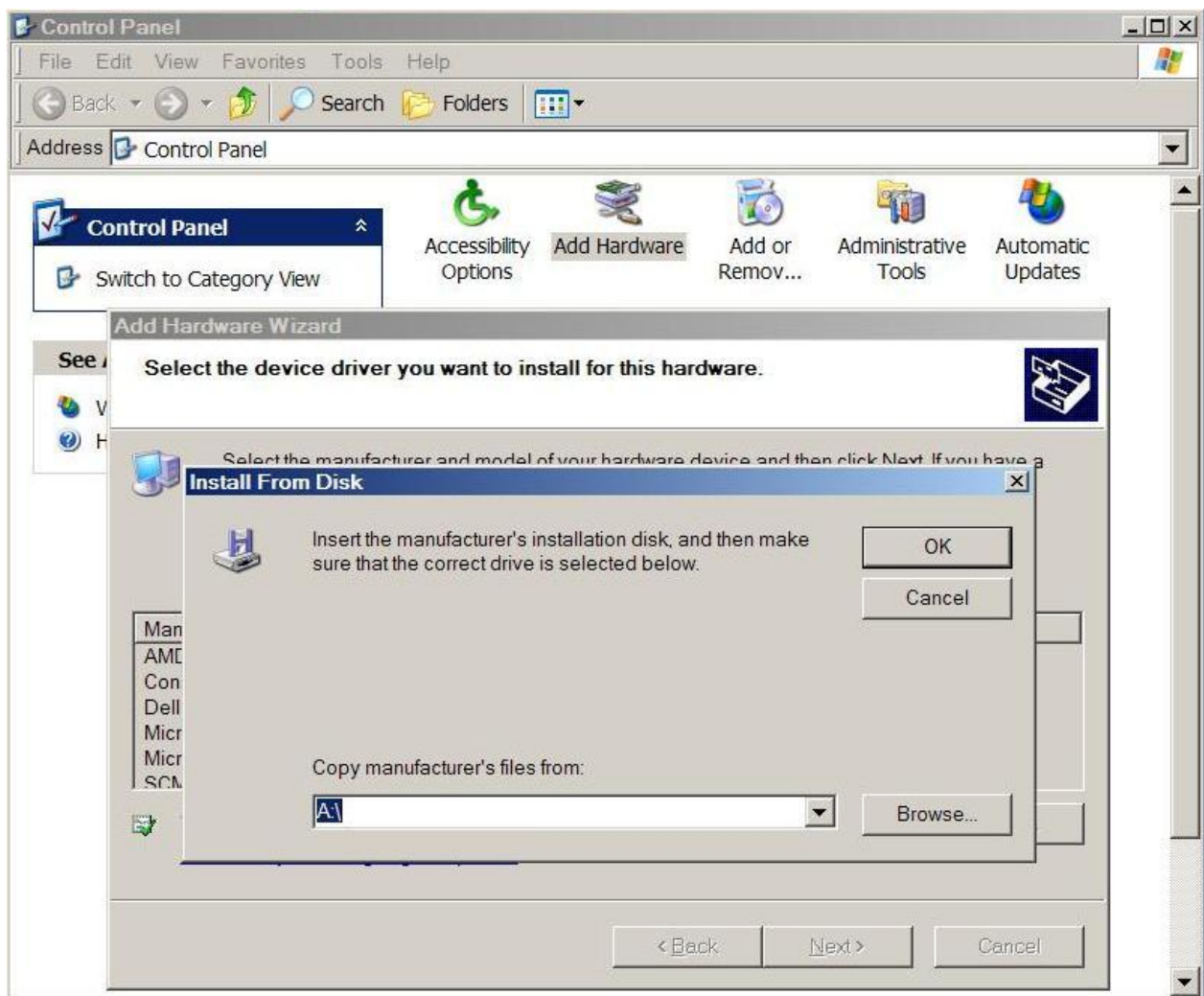
Select 'Install the hardware that I manually select from a list' and click 'Next'.



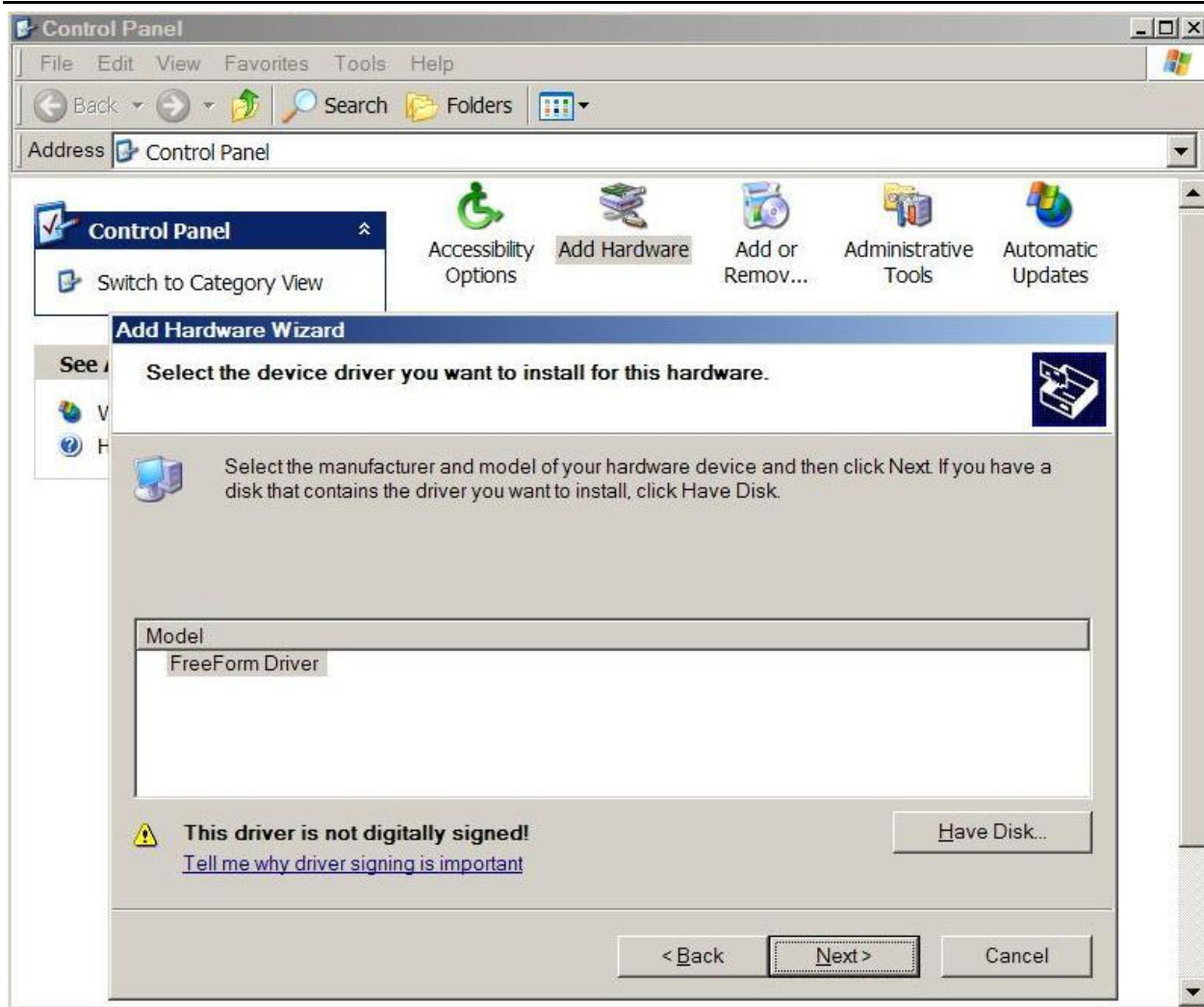
Select 'System devices' and click 'Next'.



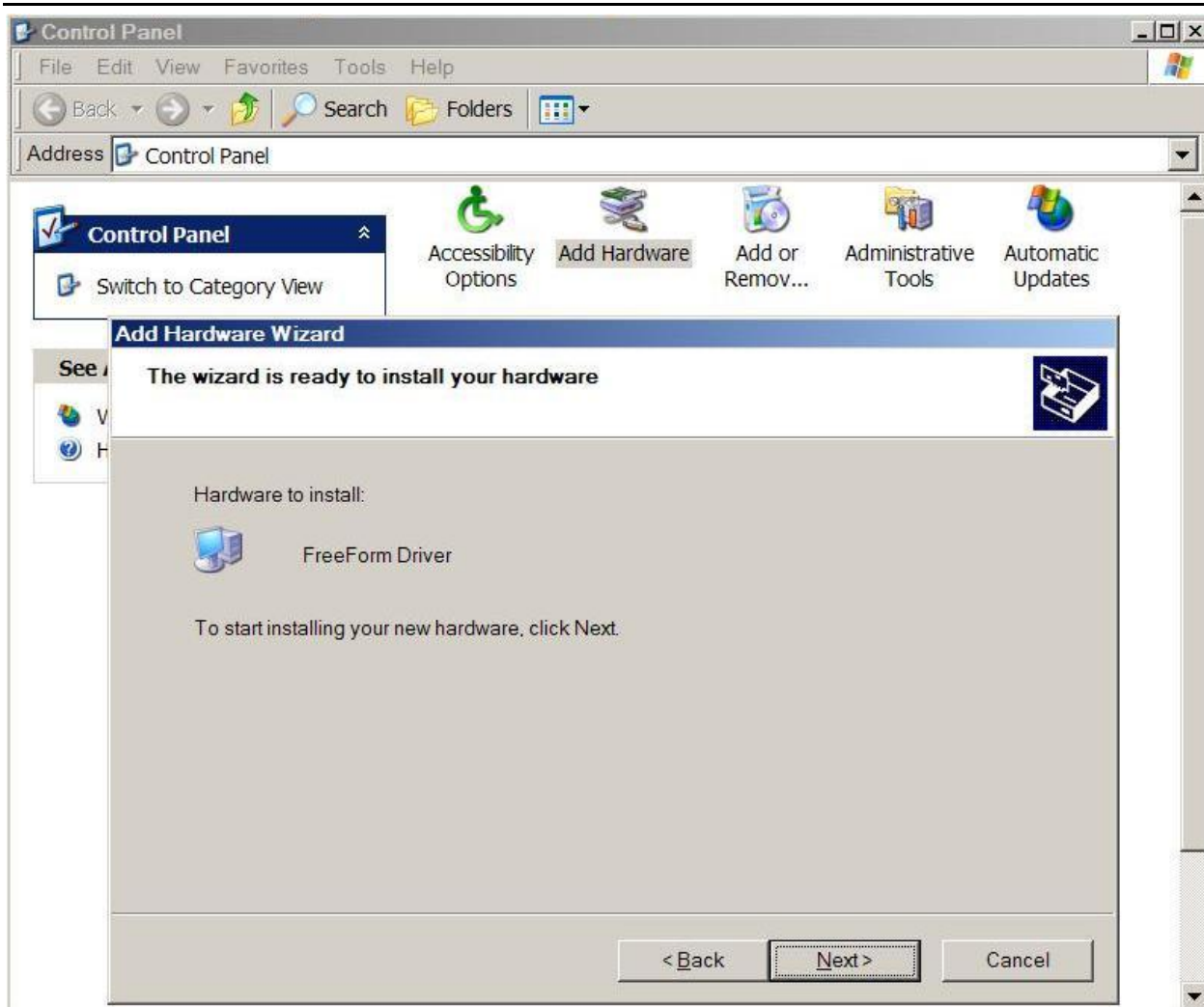
Click on 'Have Disk'.



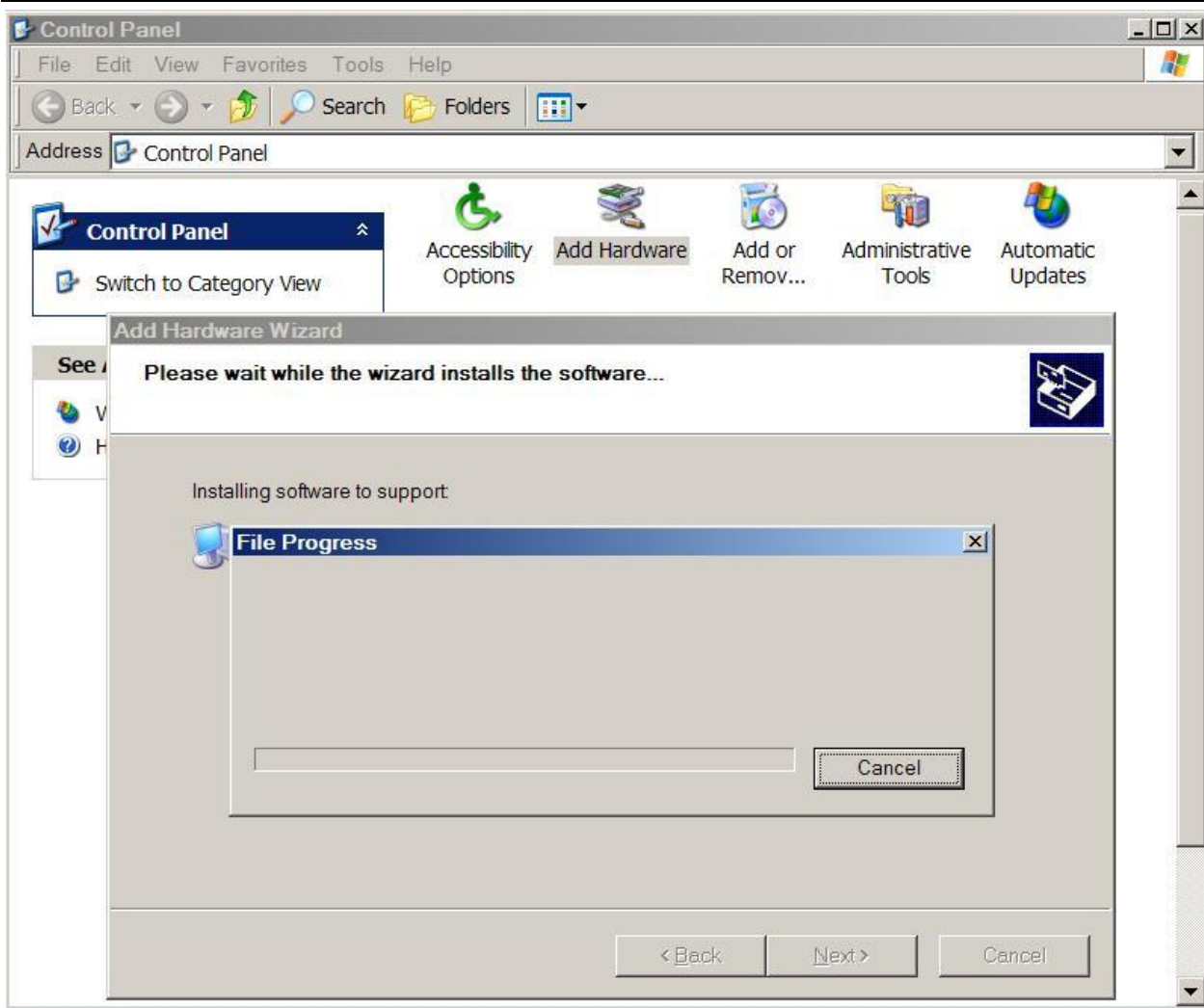
Click 'OK' if the files are copied to a floppy disk, otherwise browse the path and click 'OK'.



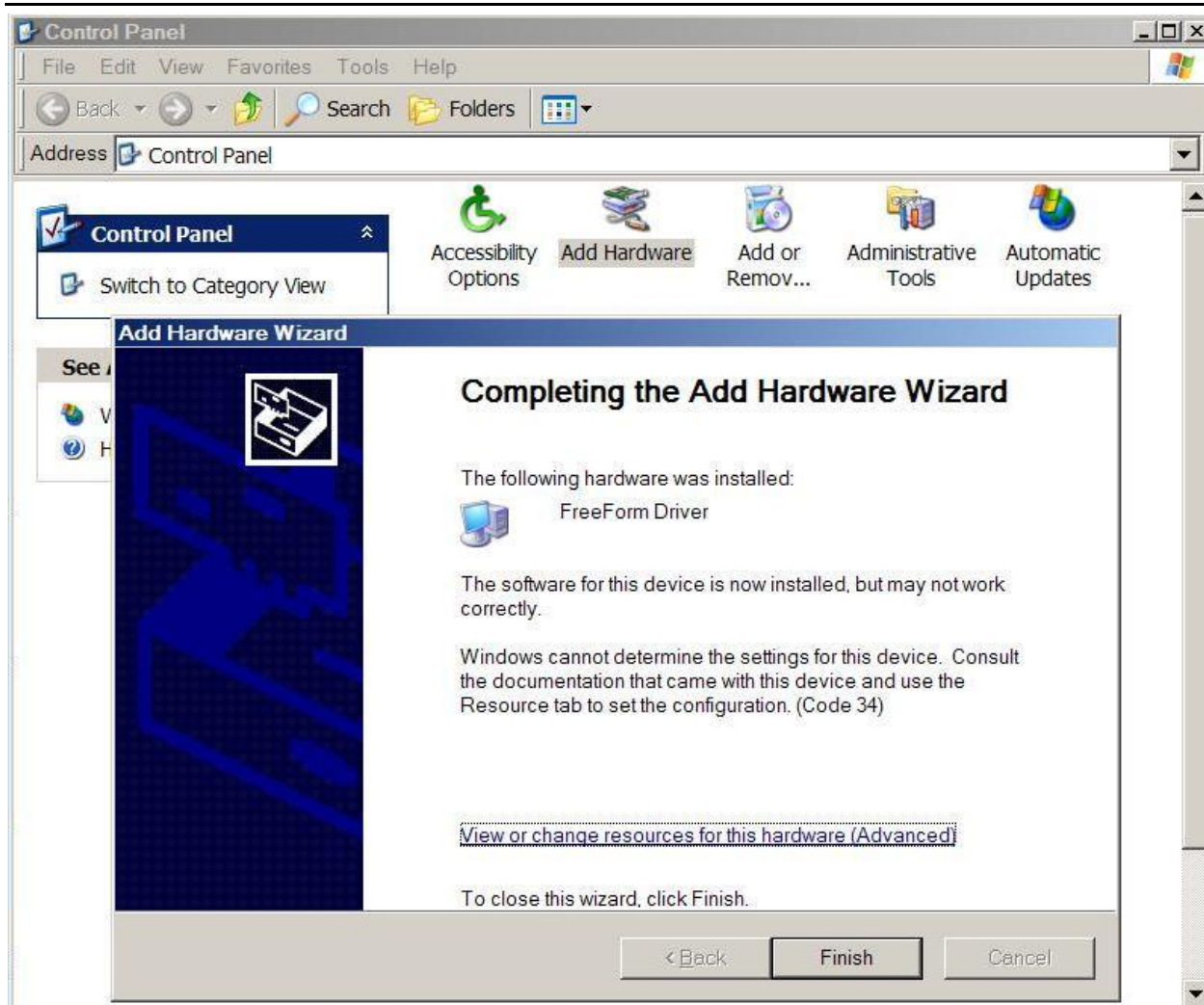
Click 'Next'.



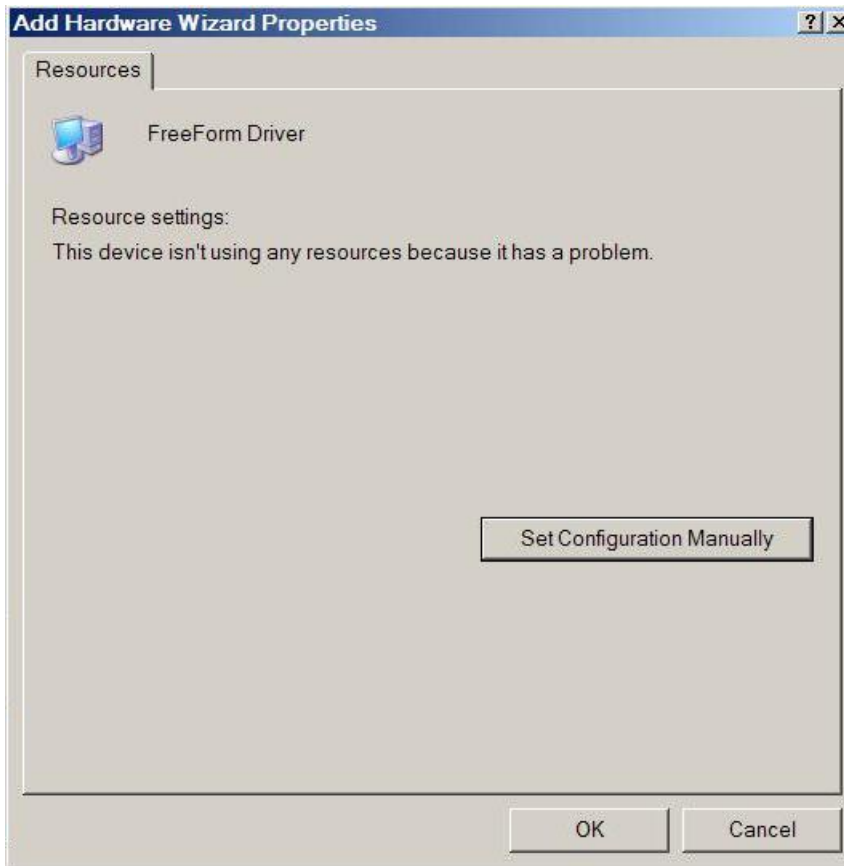
Click 'Next'.



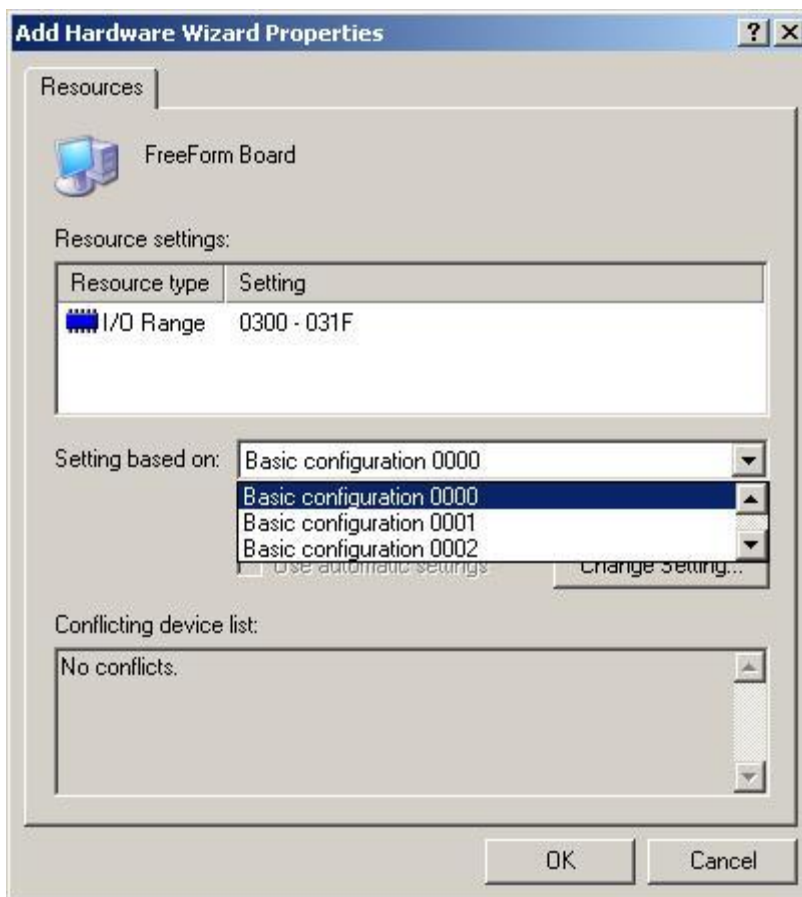
Driver installation in progress.



Click 'View or change resources for this hardware'



Click 'Set Configuration Manually'.

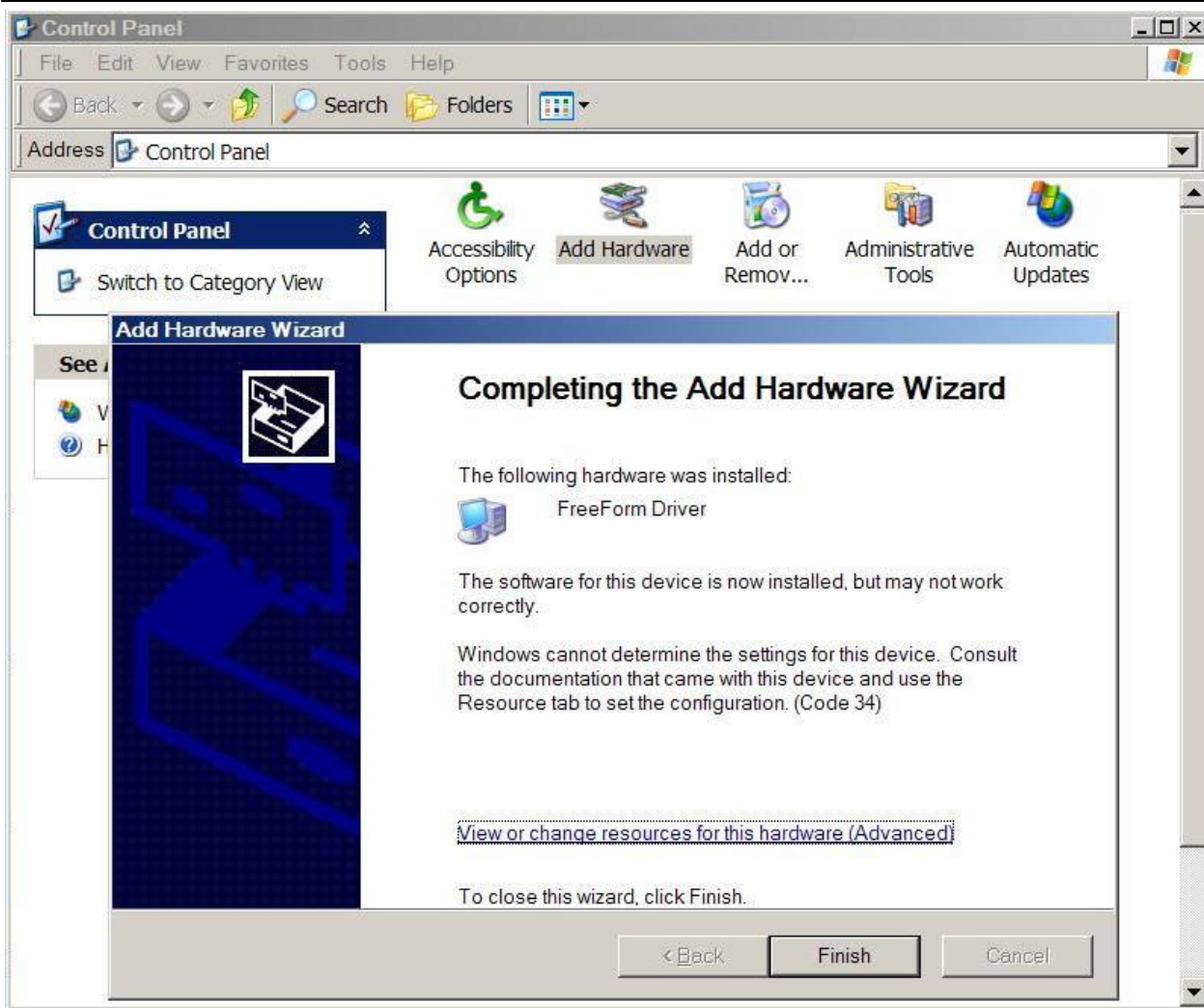


Choose from 'Basic Configuration 0000' to 'Basic Configuration 0007' for I/O address. The choice will correspond to the rotary switch settings on the board.

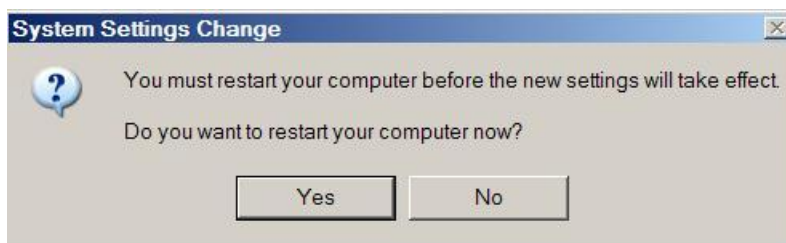
Basic Configuration 0000	300 to 31f (hex)
Basic Configuration 0001	320 to 33f (hex)
Basic Configuration 0002	340 to 35f (hex)
Basic Configuration 0003	360to 37f (hex)
Basic Configuration 0004	380 to 39f (hex)
Basic Configuration 0005	3a0 to 3bf (hex)
Basic Configuration 0006	3c0 to 3df (hex)
Basic Configuration 0007	3e0 to 3ff (hex)

Make sure the resources you select do not conflict with the existing driver resource use.

Every resource selection window includes conflict information that shows whether the selected resource is free or conflicting.

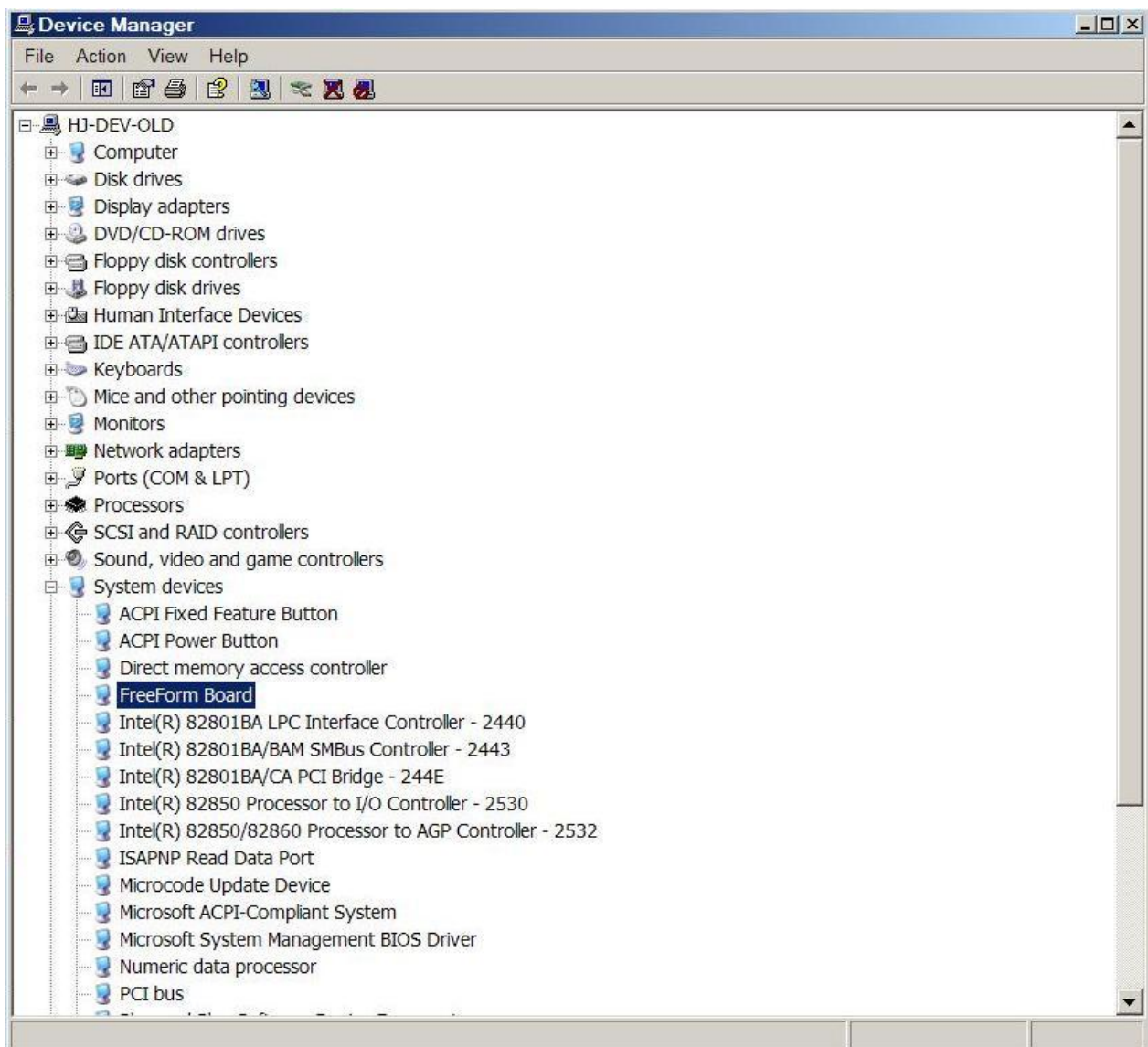


After all resource selection are done click 'Finish'.



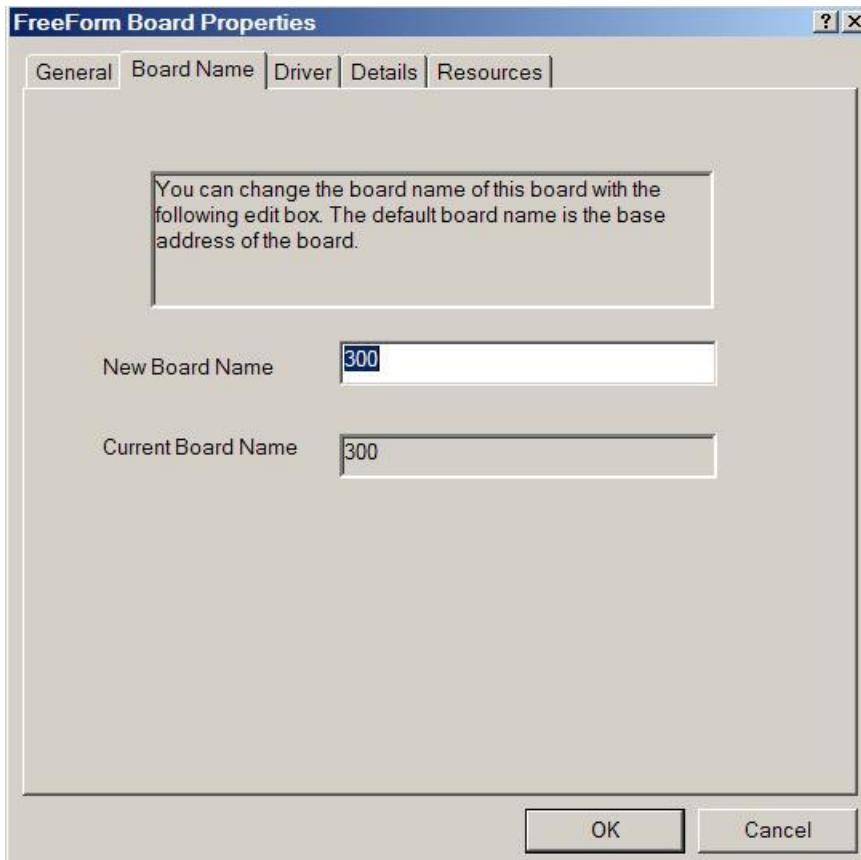
Click 'Yes'. The computer will reboot and the driver that manages the FreeForm/104 resources will be loaded.

After successful installation, the hardware can be seen from 'Control Panel -> System -> Device Manager -> FreeForm Board'.



2.2 Board Names

The board name can be changed to any other name. The default board name is the base address of the board. Double-click on the 'System Devices -> FreeForm Board' icons from "Device Manager" and the following window will appear:



Enter the name you wish to display and click 'OK'.



3 Known Issues

3.1 Windows Vista IO Range Conflict

When using Windows Vista, IO ranges may appear to be in use when actually they are not. If you see that a known IO range is in use and you have verified that your system has this range free, simply select the range and reboot your machine. After a reboot the ranges should now appear free.

3.2 Device Name Cannot Contain Spaces

To enter a board name using the tab located in the driver properties section, be sure to use a name that does not include any spaces. Eliminating spaces in the board name will ensure that errors do not occur. Please note that although any changes made using a board name that contains spaces will succeed in the “Device Manager”, attempting to use the board name with any FreeForm API call will receive errors.