



Connect Tech Inc.

Embedded Computing Experts

www.connecttech.com

Product Change Notification

Forge/Anvil Startup Performance on Early Revisions

PCN Number:	CTIU-00073
Revision:	0.00
Issue Date:	2023-11-27
Effective Date:	2023-11-27

Connect Tech Inc.

489 Clair Rd. W., Guelph, ON CANADA N1L 0H7

Tel: 519.836.1291 ○ North America: 800.426.8979 ○ Fax: 519.836.4878

sales@connecttech.com ○ <http://www.connecttech.com>

Copyright © 2023 Connect Tech Inc. ALL RIGHTS RESERVED. Connect Tech Confidential: This copyrighted work and all information are the property of Connect Tech Inc., contain trade secrets and may not, in whole or part, be used, duplicated, or disclosed for any purpose without prior written permission of Connect Tech Inc. All Rights Reserved. The Connect Tech Inc. logo is a registered trademark of Connect Tech Inc. All other trademarks used in this document are the property of their respective owners.

1 Product Identification

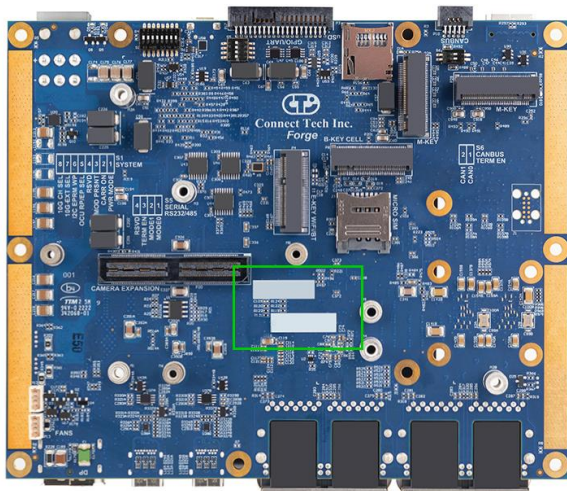
1.1 Product Data

	Original Product
Product Name	Anvil Embedded System
Part Numbers	ESG620, ESG621 (See table below)
Product Name	Forge Carrier Board
Part Numbers	AGX201 (See table below)

1.2 Means of Distinguishing Affected Products

The affected products can be identified by specific serial numbers as shown below

Product	Serial Number
AGX201-###	1830 and lower
ESG620-###	1086 and lower



2 Description and Reason of Change

AVL	<input type="checkbox"/>	Product Improvement	<input checked="" type="checkbox"/>
Material	<input type="checkbox"/>	BIOS Release	<input type="checkbox"/>
Assembly Process	<input type="checkbox"/>	Firmware Release	<input type="checkbox"/>
Assembly BOM	<input type="checkbox"/>	Datasheet / Manual	<input type="checkbox"/>
Testing	<input type="checkbox"/>	DFM	<input type="checkbox"/>
Manufacturing Site	<input type="checkbox"/>	Other	<input type="checkbox"/>
Equipment	<input type="checkbox"/>		

Connect Tech has identified certain edge cases and environmental conditions that may affect the startup performance of the Jetson AGX Orin module used on early revision Forge/Anvil products.

This startup performance issue has been ratified in later revisions of the PCBA for the Forge/Anvil products. Earlier revision PCBA's identified by the serial number ranges above can have this issue resolved via an ECN fix applied by Connect Tech Inc.

If you wish to have this ECN applied to your product, please [contact support](#) to get an RMA issued to have the ECN fix applied.

3 Impact of change (positive or negative) on fit, form, function & reliability

3.1 Quality and Reliability

Connect Tech has identified certain edge cases and environmental conditions that may affect the startup performance of the Jetson AGX Orin module used on early revision Forge/Anvil products.

3.2 Software Compatibility

No impact.

3.3 Hardware Compatibility

The startup performance issue has been ratified in later revisions of the PCBA for the Forge/Anvil products. Earlier revision PCBA's identified by the serial number ranges above can have this issue resolved via an ECN fix applied by Connect Tech Inc. This issue only effects AGX201-### Serial Numbers 1830 and lower, and ESG620-### Serial Numbers 1086 and lower.

3.4 Mechanical Compatibility

No impact.

4 Product / Revision Discontinuation

Future orders of the above mentioned products will have the issues fixed and resolved.

5 Contact Information

Phone	+1-519-836-1291
Email	sales@connecttech.com