



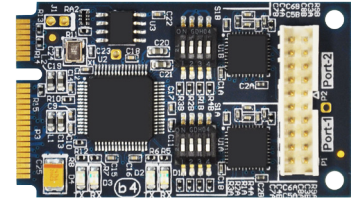
Mini PCI Express Serial

Connect Tech's MPG00x series are rugged Mini PCIe modules that are ideal for adding extra serial port capabilities to any system with minimal increase in overall system size and power consumption. Choose from PCI Express x1 lane or a USB-2 host bus interface. Various modules are available offering switchable RS-232/422/485, optional isolation and full modem control signals. The wide operating temperature and latching connector and cabling solution allow these modules to be used in harsh environments.

Compatibility with a large variety of popular operating systems allows these boards to be easily integrated into a wide array of new and existing systems.

Product Names & Part Numbers:

Mini PCI Express Serial
MPG001, MPG002, MPG003, MPG004
MPG013, MPG014



MPG001



MPG003

Specifications

| Part | MPG001 - MPG002 | MPG003 - MPG004 / MPG013-MPG014 |
|--------------------------------|--|--|
| Number of Ports | 2 ports | 2 ports |
| Electrical Interface | Hardware selectable RS-232/422/485 | Hardware or software selectable RS-232/422/485 |
| Host Bus | USB | PCI Express |
| Connectors | Mini Tek, 2mm, 20 pins | Mini Tek, 2mm, 2 x 10 pins |
| Isolation | – | 500V |
| Control Signals | RS-232: TxD, RxD, RTS, CTS, DTR, DCD, DSR, RI RS-422/485: TxD+/-, RxD+/- | RS-232: TxD, RxD, RTS, CTS, DTR, DCD, DSR, RI RS-422/485: TxD+/-, RxD+/- |
| Baud Rate | RS-232: 50 bps to 921.6 Kbps RS-422/485: 50 bps to 12Mbps Slow Slew Rate: 250Kbps | RS-232: 50 bps to 921.6 Kbps RS-422/485: 50 bps to 1Mbps Optional to 20Mbps Slow Slew Rate: 250Kbps |
| Interrupts | – | Assigned by Plug and Play resources |
| Memory Addresses | – | Assigned by Plug and Play resources |
| UART Type | USB UARTs with up to 4K byte FIFO transmit and receive FIFO buffers for each port | Dual PCIe UARTs with up to 256 byte transmit and receive FIFO buffers for each port |
| Dimensions | 50.95 mm x 30 mm Mini PCIe "Full" | 50.95 mm x 30 mm Mini PCIe "Full" |
| Environmental | Storage/Operating Temperature: -40° C to 85° C (-40° F to 185° F) Humidity: 5 to 95% non-condensing | Storage/Operating Temperature: -40° C to 85° C (-40° F to 185° F) Humidity: 5 to 95% non-condensing |
| Software Compatibility | Windows 2000/CE/XP/XP x64/XPe/Server 2003/Server 2003 x64/Vista, QNX 6.X and Linux | Windows 2000/CE/XP/XP x64/XPe/Server 2003/Server 2003 x64/Vista, QNX 6.X and Linux |
| Power Requirements | 150mA @ 3.3V Max (excluding Line loads) | 175mA, 3.3V Max (Excluding Line loads) |
| Software Programmable Settings | – | Line Mode Slow Slew RS-422 Termination |

FEATURES

- ✓ PCI-Express x1 Lane or USB-2 Host Bus Interface
- ✓ 2 ports individually isolated or non-isolated
- ✓ Switchable RS-232/422/485
- ✓ Supports full duplex (4 wire), half duplex (2 wire) with auto TxD echo cancellation modes in RS-422/485
- ✓ Bi-directional data speeds up to 20Mbps (optional) (RS-422/485)
- ✓ Port settings can be set up by software (on certain models)
- ✓ Slow Slew Rate capability (on certain models)
- ✓ Operating temperature range of -40°C to 85°C

Connect Tech Inc.

42 Arrow Road, Guelph ON Canada
Tel: 519.836.1291 Fax: 519.836.4878
Toll: 800.426.8979 (North America)
Email: sales@connecttech.com
www.connecttech.com



©2023, Connect Tech Inc. All trademarks are property of their respective holder.