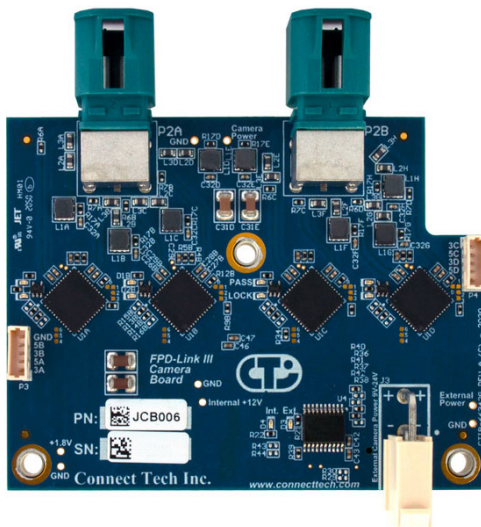


This expansion board allows for the connection of FPD-Link III Deserializers to be connected to the Rogue or Rogue-X carriers.



Power to the cameras is provided by PoC (Power over Coax) so all the data, control signals, and power are sent through a single 50 Ohm Coaxial cable. This allows for flexibility in cable routing and ease of installation in automotive applications. The main power for the board comes from the Camera Expansion Header.



MIPI output is via a single 4-lane MIPI CSI-2 v 1.3 output from each Deserializer, allowing for 16 lanes total.

## FEATURES

- ✓ 8x FPD-Link III camera inputs, 2x per deserializer
- ✓ 16-lane MIPI output; single 4-lane MIPI CSI-2 per deserializer
- ✓ Internal or External Camera power
- ✓ Power over Coax

## SPECIFICATIONS

<b>Size</b>	75 mm x 57 mm (2.95" x 2.24")	<b>Weight</b>	TBD
<b>NVIDIA Xavier Connection (Uplink)</b>	1x High Density Connector Camera Board will mate to the NVIDIA Jetson "Camera Expansion Header"	<b>(FPD-Link III) Camera Inputs</b>	8x Total
<b>Deserializer</b>	Texas Instruments DS90UB954	<b>MIPI Output</b>	A single 4-lane MIPI CSI-2 v1.3 output from each Deserializer (16-lanes total)
<b>Camera Input Connectors</b>	2x Quad Right Angle	<b>PoC (Power-Over-COAX)</b>	All 8 cameras will be sourced Power-Over-COAX from JCB006
<b>Power</b>	Can be directly powered from Camera Expansion Header or External +12V Input	<b>Operating Temperature</b>	-40°C to +85°C (-40°F to +185°F)
<b>Warranty and Support</b>	1 Year Warranty and Free Technical Support		